



MIND MAPPING STRATEGY (MMS) TO PROMOTE STUDENT ENGAGEMENT IN GEOGRAPHY EDUCATION

Mr. Sachin J. Sakhare

Assistant Professor, MIT School of Education, Pune

Abstract

A mind map is a innovative and creative thinking tool that can combine text, color, graphic images, lines, and symbols for visual representation. This can not only sort out the logical framework, but also help diversify people's thinking, cultivate people's innovative thinking, make users' thinking more active, and improve their ability to analyze and solve problems. Mind Mapping as a creative process was introduced as a culturally relevant pedagogy aimed at enhancing the teaching and learning experience in an education. Through interactions with Mind Mapping students are very artistic and visual and enjoy group-based activities. Now, the effective use of mind maps can also enhance the user's memory, good interactive students centric learning experiences, improve learning and work efficiency, and solve problems creatively and efficiently. Teachers can better plan their teaching with the help of mind maps, and arrange the content of class time reasonably and effectively.

The present paper focused on Mind Mapping Strategy (MMS) to Promote Student Engagement in Geography Education with prime objectives are (i) To understand the concept of Mind Mapping Strategy (MMS) (ii) To illustrate the Importance of Mind Mapping Strategy (MMS) in the Student Engagement in Geography Education (iii) To discuss the benefits of using mind mapping in daily Teaching-Learning Geography classroom. The Researcher used methodology of the research is a different type involving an interpretative, conversation and study secondary sources, like books, articles, journals, thesis, university news, expert opinion, and websites, etc.

Key Words: *Mind Mapping Strategy (MMS), Student Engagement, Geography Education*

Introduction:

In Geography, the mind mapping learning technique has been extensively suggested and utilized in different ways for understanding the geographical concepts. Mind maps are multi-

tactile apparatuses that utilize visuospatial direction to combine information, and continuously, assist learners to categorize and preserve data through innovative way. A Mind Mapping Strategy (MMS) is an innovative visual thinking tool which maps out your studies and ideas in a brain-friendly way using the fashion of knowledge acquainted radiant thinking. MMS combines colour, imagery, visual-spatial chops and imagination to spark your brain to suppose more creatively, learn briskly, remember further and communicate better. A Mind Map Strategy (MMS) involves writing down a central theme and thinking of new and affiliated ideas which radiate out from the center. By fastening on crucial ideas written down in your own words and looking for connections between them, you can collude knowledge in a way that will help you to more understand and retain information.

Mind Mapping Strategy (MMS) can be used for assignments and essay jotting especially in the original stages, where it's an ideal strategy to use for your allowing'. Mind mapping can be enhancing for knowledge generating, imaging, organizing, note-taking, problem-working, decision-making, revising and clarifying your university content, so that you can get started with assessment tasks. Basically, a mind chart is used to 'communicate' a content and is a great strategy for scholars.

Mind Chart Strategy (MMS) is a nonstop process of the development and literacy of the child on multiple confines. Still our present education system emphasizes on preparing scholars centric education for further interactive tutoring – literacy.

Objectives of the Study:

The present study has the following objectives-

- (i) To understand the concept of Mind Mapping Strategy (MMS).
- (ii) To illustrate the Importance of Mind Mapping Strategy (MMS) in the Student Engagement in Geography Education.
- (iii) To discuss the benefits of using mind mapping in daily Teaching-Learning Geography classroom.

Mind Mapping Strategy (MMS) is a one strategy of Constructivism approach. MMS is the process that says learners creates and develop the construct knowledge as per the given examples. As per the students experience, gathering some ideas they build their own representations and incorporate new information into their pre-existing knowledge.

Concept of Mind Mapping Strategy (MMS):

Mind Mapping Strategy (MMS) First vulgarized by the psychology author Tony Buzan, it was developed over 30 times ago as a note-taking and summarization system that maximized on the different functionalities of the two halves of the brain.

A Mind Mapping Strategy (MMS) involves writing down a central theme and thinking of new and affiliated ideas which radiate out from the center. Content related fastening on crucial ideas written down in your own words and looking for connections between them, you can collude knowledge in a way that will help you to more understand and retain knowledgeable information. (Ref. NCF2005)

Mind Map Strategy (MMS) and Teaching-Learning of Geography Education:

Mind Mapping is an effective technique of connecting key concepts using lines, images, and linkages in Geography Education. A Mind Map shows the relationship between different Geographical ideas and facts, supports learning and improves creative problem solving and information recording. They can be used to organize your thoughts, plan projects, brainstorm new ideas or solve problems. National Curriculum Framework (2005) concentrated on the new trends in education changed the present script and espoused the constructivist approach which is need grounded and more focused on innovative conditioning and knowledge accession. It was planting that constructivist instructed scholars had advanced scores than the scholars who were exposed to conventional system of tutoring. Scholars more learn through Mind Map Strategy (MMS) it imbibes the combines color, imagery, visual-spatial chops and imagination to spark your brain to suppose more creatively, learn briskly, remember further and communicate better. Attention wanes constantly and they aren't suitable to retain the information for long time- period. Mind Mapping Strategy (MMS) provides a unique and standardized interactive literacy to all learners which tend to profit to those whose literacy style and background knowledge fits well with the tutoring material.

A Mind Mapping Strategy (MMS) is a graphical way to represent ideas and generalities. It's a visual thinking tool that helps structuring information, helping you to more dissect, comprehend, synthesize, recall and induce new ideas. It's also helpful to understanding the generalities in between diurnal tutoring- literacy process. Through Mind Mapping Strategy (MMS) tutoring- literacy process is veritably interactive, intriguing and knowledge acquainted.

Mind Mapping Strategy (MMS) is a one strategy of Constructivism approach. MMS is the process that says learners creates and develop the construct knowledge as per the given exemplifications. As per the scholar's experience, gathering some ideas they make their own representations and incorporate new information into their pre-existing knowledge.

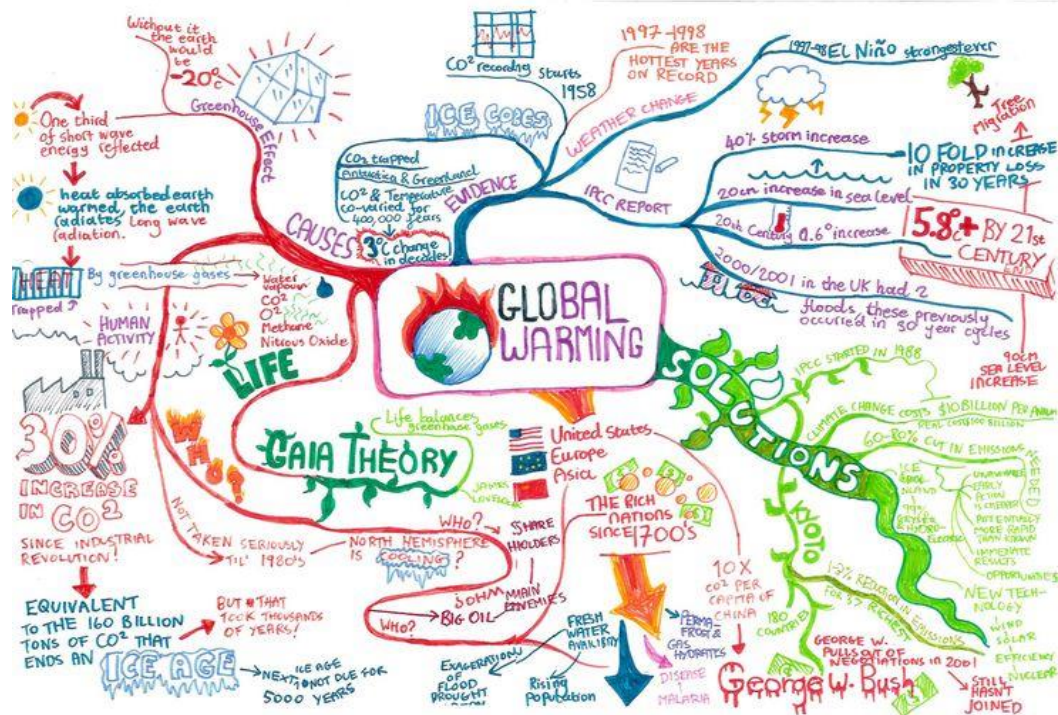
Creating Mind Mapping Strategy (MMS):

Following are the strategy for creating Mind Map-

- ✓ First Perfect the conception and place the central theme/ main idea or controlling point in the center of your runner. Now find it easier to place your runner on the side, in geography exposure, which is easier for drawing purposes.
- ✓ As per the content produce and use lines, arrows, speech bubbles, branches and different colors as ways of showing the connection between the central theme/ main idea and your ideas which stem from that focus. The connections are important, as they may form your essay paragraphs.
- ✓ Avoid creating an cultural masterpiece. Also draw snappily without major pauses or editing. Chances are, your first idea was fine and you placed that idea in the direction or on the branch you allowed made the utmost sense. It's important in the original stages of mind mapping to consider every possibility, indeed those you may not use.
- ✓ Choose different colors to emblemize different effects e.g. you may choose blue for commodity you must incorporate in your paper, black for other good ideas, and red for the effects you need to probe or check with your instructor/ speaker. Your system is entirely over to you, but try to remain harmonious so that you can more reflect on your mind chart at a after stage.
- ✓ Leave some space on your runner. The reason for this is that you can continue to add to your illustration over a period of time. However, you may like to use A3, If A4 sized paper feels too small.

A Mind Mapping Strategy (MMS) is a illustration for representing tasks, words, generalities, or particulars linked to and arranged around a central conception or subject using anon-linear graphical layout that allows the stoner to make an intuitive frame around a central conception. A Mind Mapping Strategy (MMS) can turn a long list of monotonous information into a various, memorable and largely systematized illustration that works in line with your brain's natural way of doing effects.

Example: Mind Mapping Strategies (MMS) for 'Global Warming' Topic:



Importance of Mind Mapping Strategy (MMS) in the Teaching Learning Process

Develop the Thinking Process:

- Enhancing Brainstorming
- Useful for Decision-making
- More efficient Project Planning

Learning Experiences:

- Importance for Note - taking
- More Note-making
- Useful for Studying

Enhancing Communication Process:

- Efficient for Presentations
- More communication through Meetings
- Best for Speeches

Mind Mapping Strategy (MMS) in Geography Education is an effective tool for scholars and preceptors seeking to maximize the literacy experience. A mind chart is a literacy tool that allows druggies to produce and partake visual representations of effects like lectures, notes, and exploration. In fact, mind mapping in education is useful for a wide variety of tasks and can be fluently acclimatized to the stoner's requirements. Following are the significance of Mind Mapping Strategy (MMS) using as a tool in Tutoring- Literacy-

- Increase pupil engagement for Enhancing Geographical Concepts

- Increase pupil appreciation and performance for Geographical Awareness
- Encourage scholars towards natural provocation and wisdom tone- efficacy.
- Incite critical and logical thinking.
- Stimulate interest in learning wisdom.

Further to having these issues, the Mind Mapping Strategy (MMS) should give a meaningful environment for knowledge acquainted content development. Through MMS cooperative small group conditioning, which would go structured openings for developing content proficiency in the environment of enhancing knowledge.

Benefits of Mind Mapping:

- Relief new innovative Geographical ideas snappily and fluently
- Make better Geographical understanding and new concepts
- Take presto effective notes in meetings
- Make terse notes from published Geographical material
- Prepare and present Geographical documents etc.
- Study more and remember further
- Geographical problem solving and Innovation

Conclusion:

Mind Mapping Strategy (MMS) in the simplest sense, is a visual tool that's used to organize information. Through Mind Map Strategy (MMS) to achieve advanced situations of attention and creativity, together with lesser association and further terse communication, mind mapping might be an effective strategy for you to consider. Mind Map Strategy (MMS) giving you an overview of a large subject/ broad content and allowing you to represent it in representative generalities. MMS encouraging you to see the bigger picture and creative pathways. MMS enabling you to plan/ make choices about the selection of resource material you have for an assignment and where you're going to place it. MMS furnishing with a more seductive and pleasurable format for your eye/ brain to look at, poet over and remember.

References:

- Akinoglu, O., & Yasar, Z. (2007). *The Effects Of Note Taking In Science Education Through The Mind Mapping Technique On Students'attitudes, Academic Achievement And Concept Learning. Journal of Baltic Science Education*, 6 (3).
- Anderson, J. V. (1993). *Mind mapping: A tool for creative thinking. Business Horizons*, 36
- Brinkmann, A. (2003). *Graphical knowledge display–Mind mapping and concept mapping as efficient tools in mathematics education. Mathematics Education Review*, 16

- Dhindsa, H. S., & Anderson, O. R. (2011). *Constructivist-visual mind map teaching approach and the quality of students' cognitive structures. Journal of Science Education and Technology*, 20(2)
- Edwards, S., & Cooper, N. (2010). *Mind mapping as a teaching resource. The Clinical Teacher*, 7(4)
- Eppler, M. J. (2006). *A comparison between concept maps, mind maps, conceptual diagrams, and visual metaphors as complementary tools for knowledge construction and sharing. Information Visualization*, 5(3)
- Evrekli, E., Balim, A. G., & İnel, D. (2009). *Mind mapping applications in special teaching methods courses for science teacher candidates and teacher candidates' opinions concerning the applications. Procedia-Social and Behavioral Sciences*, 1(1)
- Johnson, J. K., & Reynolds, S. J. (2005). *Concept sketches - using student- and instructor-generated, annotated sketches for learning, teaching, and assessment in geology courses. Journal of Geoscience Education*, 53(1)
- Koul, Lokesh., (2011) **Methodology of Educational Research**, Vikas Publishing House, IVth edition. New Dehli.
- Willis, C. L., & Miertschin, S. L. (2006). *Mind maps as active learning tools. Journal of Computing Sciences in Colleges*, 21(4)